



**MARINE
CARE**

CARECOAT RECOSEAL 10

DISCOVER THE DIFFERENCE

**Easy, ready to use color & gloss recovery
2-component coating, for quick application
and long lasting results**

DESCRIPTION

Carecoat Recoseal 10 is a unique high solid, 2-component clear-transparent polymeric coating based on latest low molecular weight technologies for color restore, improved gloss, enhanced UV resistance and long-term protection of painted, coated, plastic, ceramic, fiber reinforced polymer, metal, wooden and stone surfaces that are weather-beaten discolored, chalked and/or eroded.

Besides reconditioning of weathered surfaces, Carecoat Recoseal 10 can also be used as an initial treatment for new surfaces, prolonging the lifetime and extending maintenance/cleaning intervals. To prevent application patterns of the pads, it is best to apply by spraying on new, or still smooth and shining surfaces

Carecoat Recoseal 10 consists of modified organic and inorganic micro molecules, giving it the following enhanced properties:

- Low viscosity & highly crosslinked
- Curing at high humidity ($\leq 90\%$) and at low temperature ($\geq 5^{\circ}\text{C}$)
- Long pot life ($>6-10$ hours)
- Extreme penetration with optimal adhesion
- Outstanding corrosion-, UV-, salt and chemical resistance
- Exceptional gloss retention and excellent abrasion resistance
- Low adhesion of atmospheric pollution; once applied, easy to clean
- Easy and quick in manual application
- Transparent (not pigmented), does not leave white stains

APPLICATION AREAS

CARECOAT RECOSEAL 10 can be, amongst others, applied to (plastic) lifeboats, teak decks, pool areas, deck chairs, coatings and deteriorated painted surfaces. It can also be used to restore cracked and/or eroded plexiglass.

- Quick & economic application
- Color recovery
- Outstanding UV resistance
- Gloss retention



MARINE CARE BV
Oude Maasweg 35
3197KJ Botlek
The Netherlands
T. +31 (0)10 2950342
F. +31 (0)10 2950345
E. supply@marinecare.nl
W. www.marinecare.nl

APPLICATION

Carecoat Recoseal 10 is applied by special application cloths. Depending on the abrasive properties of the surface treated, the theoretical DFT of 10 µm is between 1 to 10 litres per 100 m².

Carecoat Recoseal 10 is easy to use, however, it is important to follow the below instructions for use promptly:

- It is recommended to sand down strongly eroded surfaces for best adhesion and gloss recovery of Carecoat Recoseal 10. Finish with grade 1500 or 3000 for optimal gloss.
- Ensure the surface is cleaned and degreased with for with a 0,5% - 1% solution of Careclean Multiclean. In case of heavy soot deposits; use Careclean Alkaline. Then rinse thoroughly with fresh water and **ensure the surface is really dry**.
- Ensure surface and coating temperature stay within 5°C to 30°C and that the relative humidity is between 45% and 90% (use supplied hydrometer).
- Add CARECOAT RECOSEAL 10 component B (small bottle) to component A (big bottle) and mix thoroughly to achieve a homogenous mixture. The Pot life is approximately 6-10 hours depending on the temperature and relative humidity.
- Apply application pad with blue side to application pad holder and wet the white side of the pad just enough to keep it moist. Wipe with minimum pressure over surface until it is equally and fully covered. High abrasive surfaces could require several strokes with a wetted pad to ensure maximum color and gloss recovery.
- Carecoat Recoseal 10 is cured for normal mechanical use and, if desired, a second layer after 24 hours (20-30°C). Maximum cross-linking achieved after 14-20 days. Do not accelerate curing by using forced (heated) drying.

For application on plexiglass windows, follow these instructions:

- Pre clean surface on both sides thoroughly with Careclean PreCoat* and cloths
- Apply Recoseal 10 on both sides once surface is dry, with application cloth
- Leave to dry for at least 4 hours before exposing to (sea) water, do not attempt to apply a second layer as this will not improve the see through visibility

**) Use Careclean PreCoat only on plexiglass, as it can dissolve existing paint layers*

Properties

Carecoat Recoseal 10 is standard produced in sets (A+B component).

Colour	Transparent clear
Smell	Characteristic
Type	2- component based low molecular coating
Viscosity	< 5 mPa.S at 25 °C
Storage	A & B component in closed packaging, cool, frost free and dry, exp. 1 year;

Commercial Packaging: **4000 gram kit** (4 x 905 gram comp. A, 95 gram comp. B)

- 4 x Large sponge
- 1 L Careclean Multiclean concentrate
- 2,5 KG white soft cloths (for drying after pre clean)
- 12,5 m application pad roll + applicator pad holder
- 100 pcs disposable gloves (1 box)
- Hygro-/Temperature meter

Or: **1000 gram set** (905 gram comp. A, 95 gram comp. B)

Or: **200 gram kit** + 4 pcs application pad + set disp. gloves

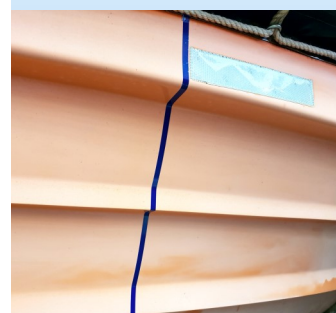
When working with CARECOAT RECOSEAL 10 the proper PPE must be worn. For detailed information on the health and safety hazards and precautions for use of this product, we refer to the Material Safety Data Sheet.

This information is based on data that we believe to be accurate and reliable and is intended to be used by persons having the knowledge and skill to apply this product properly. We assume no responsibility for results or damages incurred from their use by the Buyer. No liability (including liability for negligence) will attach to Marine Care or its servants or agents arising out of or in connection with or in relation to this product information.

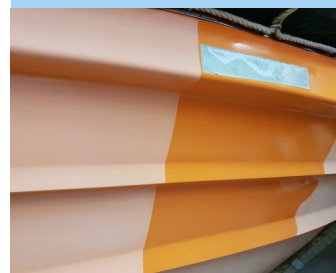


CARECOAT RECOSEAL 10

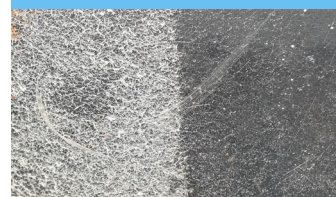
- Quick & economic application
- Color recovery
- Outstanding UV resistance
- Gloss retention



Before treatment



Right side after treatment. Only pre-clean with Careclean Multiclean



Left before, right after treatment of plexiglass

MARINE CARE BV
Oude Maasweg 35
3197KJ Botlek
The Netherlands
T. +31 (0)10 2950342
F. +31 (0)10 2950345
E. supply@marinecare.nl
W. www.marinecare.nl